

# BEN & LISA'S ADVENTURE TO TAIPEI

SAMPLE ITINERARY

Welcome to Taipei, a captivating city waiting to enchant you with its vibrant culture, stunning natural landscapes, and mouthwatering cuisine! Immerse yourself in the bustling night markets, relax in soothing hot springs, and explore charming villages tucked away in amongst nature. Taipei promises you an unforgettable adventure.



**ITINERIZE**  
TRAVEL



# 1st October 2024

## Morning

---

### FLIGHT CX494 FROM HONG KONG TO TAIPEI

Flight departure time: 10:20am

Flight arrival time: 12:10pm

Duration: 1 hour 50 minutes

Seat numbers: 36A (Ben: Window seat); 36C (Lisa: Aisle seat)

## Afternoon

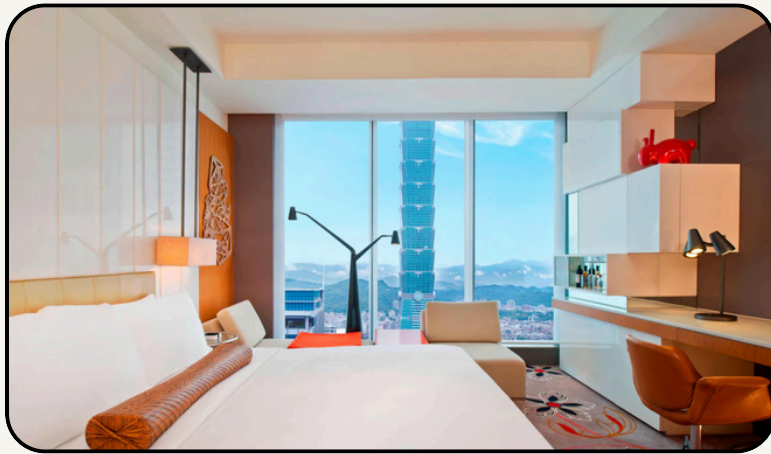
---

### AIRPORT TRANSFER TO THE HOTEL

Meeting place: TPE airport arrivals. Your driver (Mr. Chan) will be holding a sign with your names.

Travel time: 40 minutes drive to W Taipei

### CHECK IN TO W TAIPEI



Check in time: From 3pm (early check in requested)

Room Type: Spectacular Room - breakfast included

Address: No. 10, Zhongxiao East Road Sec. 5, Xinyi District, Taipei 110, Taiwan.

Nearest subway station: Taipei City Hall Station

#### About W Taipei

Immerse yourself completely in the vibrant Taipei scene at W Taipei, a hotel experience you won't soon forget. Located adjacent to the iconic Taipei 101, W Taipei offers unparalleled views of the entire 101 building right from your room. Situated in the bustling Xinyi District, you'll discover a wealth of attractions, vibrant nightlife and fabulous dining options just steps away. At the hotel, indulge your taste buds at W hotel's signature YEN Chinese Restaurant, boasting stunning city vistas, or unwind with creative cocktails at the chic bar. Take a dip in the pool or break a sweat at the gym. After a day of exploring Taipei, treat yourself to relaxation at W hotel's serene AWAY® spa, or simply unwind in the comfort of your plush W bed.

## Evening

---

### STREET FOOD TOUR THROUGH RAOHE MARKET WITH A LOCAL - PRIVATE TOUR WITH GUIDE



Meeting time: 06:00pm

Tour duration: 2 hours

Meeting place: Songshan MRT station, outside Exit 5

Getting there: Take the MRT to Songshan station

Travel time: 18 minutes

Google Maps: See Google Maps [Here](#)

#### About this tour

Experience the vibrant culinary scene of Taipei with a private street food tour through Raohe Night Market, led by a knowledgeable local guide. As you wander through the bustling lanes of this historic market, you'll have the opportunity to sample a wide array of delectable Taiwanese delicacies, from savory snacks to sweet treats. Your guide will provide insight into the flavors, traditions, and stories behind each dish, ensuring an authentic and immersive experience.

From iconic favorites like black pepper buns and oyster omelette to lesser-known specialties, this tour promises to tantalize your taste buds and introduce you to the rich culinary heritage of Taipei.

# 2nd October 2024

## Morning



### CYCLE THROUGH TAIPEI'S SIGHTS WITH A LOCAL GUIDE - SMALL GROUP TOUR



**Meeting time:** 09:00am

**Tour duration:** 4 hours

**Meeting place:** No. 9, Lane 70, Section 2, Chongqing N Rd (tour ends in the same spot)

**Getting there:** Take the MRT to Beimen MRT station

**Travel time:** 40 minutes

**Google Maps:** See Google Maps [Here](#)

#### About this experience

Experience Taipei like a local by embarking on a bicycle tour through its bustling streets. Start your day with a traditional Taiwanese breakfast to fuel your adventure. Pedal your way through traditional markets, grand architecture, serene temples, and more, while your knowledgeable guide shares insights into the city's culture and history. This small-group tour ensures a personalized experience, with a maximum of six guests. Highlights include visits to Wenchang Temple, Shuanglian Market, Dr. Sun Yat-sen Memorial House, Chiang Kai-shek Memorial Hall, Ximending, Bopiliao Historic Block, Dadaocheng Pier Plaza, Longshan Temple, Dihua Street, and Taipei Xiahai Chenghuang Temple.

## Afternoon



### TRY FAMOUS XIALONGBAO AT DIN TAI FUNG



**Address:** Taipei 110, City Hall Rd, 45號B1

**Getting there:** Take MRT from Beimen to Taipei 101 station

**Travel time:** 40 minutes

**Google Maps:** See Google Maps [Here](#)

#### About Din Tai Fung

Din Tai Fung is globally celebrated for its signature dish, xiaolongbao, also known as soup dumplings. These delicate dumplings are filled with flavorful broth and various fillings, meticulously wrapped in thin dough. In addition to xiaolongbao, Din Tai Fung offers an extensive menu of Taiwanese and Chinese dishes, including noodles, steamed buns, fried rice, and vegetable dishes, all prepared with high-quality ingredients and exquisite culinary techniques.



### MARVEL AT THE VIEWS FROM TAIPEI 101 OBSERVATION DECK



**Address:** 89F, Taipei 101, No. 7, Section 5, Xinyi Road

**Getting there:** Walk from Din Tai Fung (1 minute)

**Google Maps:** See Google Maps [Here](#)

#### About Taipei 101

Taipei 101, once the tallest building in the world, is an iconic landmark nestled in the heart of Taiwan's bustling capital city. This architectural marvel boasts a stunning observation deck that offers panoramic views of Taipei and its surrounding mountains, providing visitors with a breathtaking glimpse of the cityscape below. The tower's unique design, inspired by traditional Asian pagodas and modern technology, showcases Taiwan's blend of cultural heritage and technological innovation. Visitors can enjoy a thrilling ride in one of the world's fastest elevators to reach the observation deck, where they can marvel at the breathtaking vistas.



# Evening

---



ENJOY FRESH SEAFOOD AT A STAND UP SUSHI BAR IN ADDICTION AQUATIC



## About Addiction Aquatic

Addiction Aquatic is not just a seafood market but an off the beaten path culinary destination offering a unique dining experience. It features various sections including a live fish market, trendy stand up sushi bar, a high end hotpot restaurant, and outdoor barbecue grill. This is some of the freshest seafood you'll try, sourced directly from fishermen and suppliers.

**Address:** No. 18號, Alley 2, Lane 410, Minzu E Rd, Zhongshan District, Taipei City, Taiwan 10491

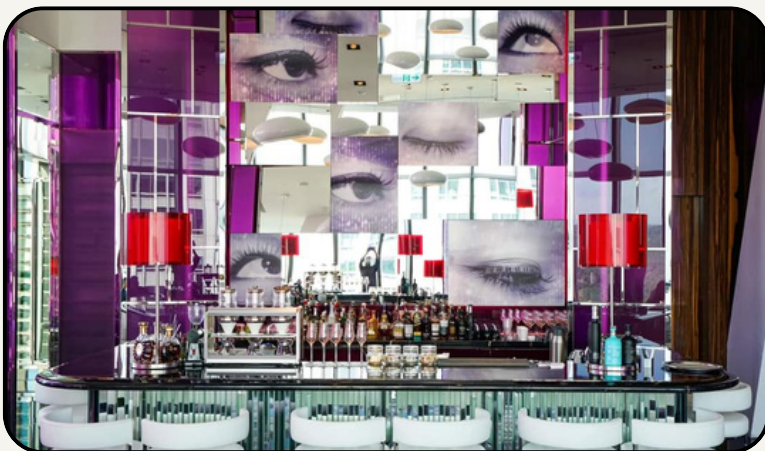
**Getting there:** Taxi/Uber from W Taipei

**Travel time:** 15-20 minutes

**Google Maps:** See Google Maps [Here](#)



HAVE A DRINK AT W TAIPEI'S YEN BAR



## About Yen Bar

Cheers to your first day in Taiwan at YEN Bar, a sophisticated and stylish venue located within W Taipei, offering guests an upscale and vibrant atmosphere to enjoy signature cocktails and premium spirits. Situated on the 31st floor of the hotel, YEN Bar boasts panoramic views of the city skyline, providing a stunning backdrop for socializing and unwinding.

**Address:** W Taipei, 31st floor

**Getting there:** Taxi/Uber back from Addiction Aquatic

**Travel time:** 15-20 minutes

**Google Maps:** See Google Maps [Here](#)



# 3rd October 2024

## Morning

---



**SPEND THE DAY RELAXING IN BEITOU**



### About Beitou

Beitou boasts a rich history dating back centuries. It gained prominence during the Japanese colonial period in the late 19th century when its natural hot springs were developed into bathhouses and resorts. After World War II, Beitou continued to thrive as a popular destination for locals and tourists alike, drawing visitors with its therapeutic waters, serene surroundings and village-like setting.

Start your morning with a walk from the MRT station to the **Beitou Hot Spring Museum**, delving into exhibits and displays that showcase the area's geothermal wonders and the evolution of its hot spring culture. Next, meander over to **Beitou Plum Garden**, a meticulously preserved Japanese-style villa surrounded by tranquil gardens. Then, walk over to **Beitou Thermal Valley** where you can witness steam rising from the earth's surface amidst lush greenery. This geothermal area is also known as Hell Valley and it offers a unique glimpse into some of our earth's natural processes. Follow this handy [Google Maps](#) link for walking directions!

**Getting there:** Take the MRT from W Taipei to Xinbeitou station

**Travel time:** 60 minutes

**Google Maps:** See [Google Maps Here](#)

## Afternoon

---



**LUNCH AT 山边咖啡 BRAE CAFE**



### About Brae Cafe

Brae Cafe is a charming cafe situated amidst the serene natural surroundings of Beitou. The cafe is known for its cozy and inviting atmosphere and offers casual food, coffee, tea and other drinks.

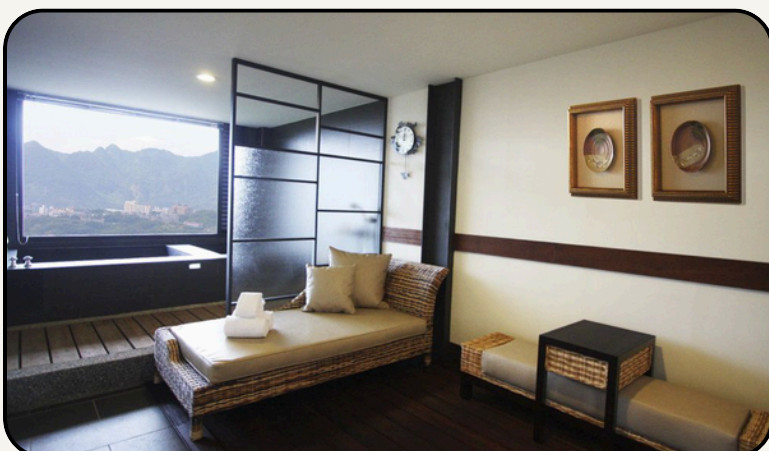
**Address:** No. 110-1號, Wenquan Rd, Beitou District

**Getting there:** Walk from Thermal Valley (5 minutes)

**Google Maps:** See [Google Maps Here](#)



**ENJOY A PRIVATE HOT SPRING EXPERIENCE AT MARSHAL ZEN GARDEN**



### About Marshal Zen Garden

Designed to evoke a sense of tranquility and harmony, Marshal Zen Garden features meticulously manicured landscapes, lush greenery, and tranquil ponds adorned with koi fish. They offer private hot spring experiences in your own room, overlooking mountain views, to unwind and relax. There's also a cute little cafe in the gardens which is a great spot for a tea after your spa experience!

**Address:** No. 34, Youya Rd, Beitou District

**Getting there:** Walk from Brae Cafe (15 minutes)

**Google Maps:** See [Google Maps Here](#)



# Evening

---



## EXPLORE THE VIBRANT XIMENDING NEIGHBOURHOOD



### About Ximending

Ximending is a vibrant district pulsating with energy and cultural diversity. This lively neighborhood is a melting pot of Taiwanese youth culture, fashion, and entertainment. From its bustling streets adorned with colorful signage to its countless shops, restaurants, and street food vendors, Ximending is a must-visit neighbourhood to spend a night in!

**Address:** Ximending

**Getting there:** Take the MRT to Ximen station

**Travel time:** 50 minutes

**Google Maps:** See Google Maps [Here](#)



## HAVE A FOOT MASSAGE AT 988养生会馆-昆明店



### About 988

Continue the relaxation of the day and treat yourself to a foot massage at a local parlour. The team at 988 are friendly and professional, whilst offering great value for money.

**Address:** No. 23號, Kunming St, Wanhua District

**Getting there:** Walk from Ximen MRT (5 minutes)

**Google Maps:** See Google Maps [Here](#)



## HAVE DINNER AT RAMEN NAGI



### About Ramen Nagi

Ramen Nagi is a beloved ramen spot known for its authentic Japanese flavors and is the ultimate comfort food! Whether you're craving a classic tonkotsu broth or looking to try new interesting flavours, Ramen Nagi promises a delicious meal.

**Address:** 08, Taiwan, Taipei City, Wanhua District

**Getting there:** Walk from 988 (5 minutes)

**Google Maps:** See Google Maps [Here](#)



# 4th October 2024

## Morning & Afternoon

---



VISIT CHARMING JIUFEN AND SHIFEN ON A DAY TOUR - PRIVATE TOUR WITH GUIDE



### About Jiufen & Shifen

Once a bustling hub during the gold rush era, Jiufen is nowadays a quaint mountain village famous for its historic tea houses, street food, narrow alleyways, and stunning coastal views. Nearby, Shifen is renowned for its picturesque waterfall and traditional sky lanterns. Releasing sky lanterns into the sky is believed to bring good luck, prosperity, and blessings. It's a cultural practice that is deeply rooted in Taiwanese folklore and tradition.

Embark on an unforgettable journey via private car starting at **Jinguashi Gold Ecological Park**, where the captivating **Yin-Yang Sea** and **Golden Waterfall** await. Delve into the region's fascinating gold mining history with the guidance of a knowledgeable local. Next, visit **Shifen Waterfall**, renowned as one of Taiwan's most breathtaking waterfalls. Afterward, wander through **Jiufen Old Street**, savoring local delicacies like taro balls for lunch, and unwind in a traditional tea house straight out of a scene from the movie "Spirited Away". Conclude your adventure at **Shifen Old Street**, where the timeless tradition of releasing sky lanterns still stands. Pen your wishes onto eco-friendly lanterns and experience the magic as you watch them drift over the historic train tracks and into the sky. Once you are ready, your guide will drop you off at W Taipei.

**Meeting time:** 09:00am

**Duration:** 8 hours

**Meeting Place:** W Taipei Lobby

**Lunch stops:** At Jiufen Old Street (your guide will show you some great spots)

## Evening

---



DINNER AT 食令SHABU | 信義區頂級鍋物 (台北101購物中心)



### About 食令SHABU

Treat yourself to an upscale restaurant experience! 食令SHABU is a high-end shabu shabu restaurant located within the Taipei 101 Shopping Center so it isn't far from your hotel! It's known for its premium ingredients, elegant atmosphere and service levels. Shabu shabu, a Japanese hot pot dish, involves cooking thinly sliced meat and vegetables in a flavorful broth at the table.

**Address:** 110, Taiwan, Taipei City, Xinyi District, City Hall Rd, 45號4F

**Getting there:** 15 minutes walk from W Taipei

**Google Maps:** See Google Maps [Here](#)



# 5th October 2024

## Morning

---



### EXPLORE YINGGE, THE POTTERY CAPITAL OF TAIWAN



#### About Yingge

Yingge, often referred to as the "Pottery Town," is a renowned pottery-producing area celebrated for its rich ceramic heritage, dating back over two centuries. Yingge's picturesque streets are lined with pottery shops, studios, and galleries, offering visitors a glimpse into Taiwan's vibrant ceramic culture.

Begin your exploration of Yingge by visiting the **Yingge Ceramics Museum**. Learn about the history and art of pottery in Taiwan through the museum's impressive collection of ceramics and rotating exhibitions. After the museum, take a leisurely stroll along **Yingge Old Street**. Browse through the numerous pottery shops and galleries lining the street, where you can admire and purchase handmade earthenware products.

**Getting there:** Take the MRT to Taipei Main station then hop on a train to Yingge station

**Travel time:** 60 minutes

**Google Maps:** See [Google Maps Here](#)

## Afternoon

---



### LUNCH AT TEA DAY RESTAURANT



#### About Tea Day

A restaurant showcasing Taiwanese cuisine, with a focus on locally sourced ingredients and authentic recipes. From savory noodle dishes and succulent braised meats to delicate tea-infused desserts, Tea Day Restaurant offers a diverse menu that caters to all palates. In addition to its delectable cuisine, Tea Day Restaurant also takes great pride in its extensive selection of teas, sourced from renowned tea regions across Taiwan.

**Address:** 239, New Taipei City, Yingge District,

**Getting there:** Walk from Old Street (4 minutes)

**Google Maps:** See [Google Maps Here](#)



### TRY YOUR HAND AT THROWING POTTERY AT SHU'S POTTERY WORKSHOP



#### About this experience

When in Yingge, do as the locals do! With an instructor, create your own ceramic by using a pottery wheel, dry and glaze your creation, and place your creation into a kiln at the end to harden the clay. The perfect souvenir to take home.

**Address:** 239, New Taipei City, Yingge District

**Getting there:** Walk from Tea Day (4 minutes)

**Google Maps:** See [Google Maps Here](#)



# Evening

---



## HAVE DINNER AT YUAN FANG GUABAO



### About Yuan Fang Guabao

Yuan Fang Guabao, also known as Yuan Fang Pork Bun, is a famous street food delicacy in Taipei, Taiwan. It is a type of guabao, which is a traditional Taiwanese snack consisting of a steamed bun folded over and filled with savory ingredients. What sets Yuan Fang Guabao apart is its generous filling of tender and flavorful pork belly, which is typically slow-cooked until it is melt-in-your-mouth tender.

**Address:** No. 17-2, Huaxi St, Wanhua District

**Getting there:** Take the train to Wanhua station

**Google Maps:** See Google Maps [Here](#)



## HAVE A DRINK AT SAKEBONO SAKE BAR 曙 日本清酒吧



### About Sake

Sakebono Sake Bar is a casual and local haunt serving up a wide selection of high quality sake in a friendly and comfy environment amongst locals.

**Address:** No. 226號, Section 1, Xiyuan Rd

**Getting there:** 10 minute walk from Yuan Fang Guobao

**Google Maps:** See Google Maps [Here](#)



# 6th October 2024

## Morning

---



### RIDE THE MAOKONG GONDOLA & EXPERIENCE TEA CULTURE



#### About the Maokong Gondola

The Maokong Gondola is a scenic cable car system in Taipei, Taiwan, offering stunning views of the city and mountains. It connects Taipei Zoo with Maokong, a hilltop village known for its tea culture and hiking trails. It is a truly beautiful setting!

Start your day early and board the **Maokong Gondola** and enjoy the scenic ride up to Maokong (around 30 minutes). Along the way, you'll be treated to breathtaking views of Taipei City and the surrounding mountains. Upon arriving at Maokong Station, take a leisurely stroll along the **Maokong Tea Plantation Trail**, which offers stunning views of the tea fields and surrounding landscapes. Along the trail, you'll find various viewpoints and rest areas where you can pause to take photos or simply enjoy the scenery.

**Getting there:** Take the bus to Maokong Gondola station

**Travel Time:** 15 minutes

**Google Maps:** See Google Maps [Here](#)

## Afternoon

---



### LUNCH AT 猫空 上易茶莊 SUNYANG TEAHOUSE



#### About Sunyang Teahouse

Sunyang Teahouse (上易茶莊) is a renowned teahouse located in Maokong, Taipei, Taiwan. Known for its serene atmosphere and traditional tea culture, Sunyang Teahouse offers visitors a unique experience to enjoy a variety of high-quality teas and home cooked meals in a beautiful setting surrounded by nature.

**Address:** 116, Taiwan, Taipei City, Wenshan District

**Getting there:** Walk from Gondola station (2 minute)

**Google Maps:** See Google Maps [Here](#)



### VISIT TAIPEI ZOO



#### About the Taipei Zoo

Taipei zoo covers an area of approximately 165 hectares (400 acres) and is home to over 2,000 animals representing more than 190 species from around the world. Surrounding the zoo are beautiful mountains and a tropical atmosphere. Some of the highlights include giant pandas, Asian elephants, koalas, giraffes, and various species of birds, reptiles, and amphibians. This is one of Asia's best zoos and it is well worth a visit!

**Address:** No. 30號, Section 2, Xinguang Rd

**Getting there:** Take the Gondola down to Taipei Zoo

**Travel Time:** 30 minutes

**Google Maps:** See Google Maps [Here](#)



# Evening

---



## EXPLORE STREET FOOD AT LIJIANG STREET NIGHT MARKET



### About Lijiang Street Night Market

Go out with a bang on your last evening in Taipei. Lijiang Street Night Market is recognised as one of the city's most popular and well-known night markets. It is both a vibrant and bustling place where visitors can find a diverse range of food stalls and vendors selling traditional Taiwanese snacks such as stinky tofu, oyster omelets, grilled skewers, bubble tea, and more.

The market is also known for its fresh seafood offerings, including grilled squid, shrimp, and crab.

**Address:** Linjiang St, Da'an District, Taipei City

**Getting there:** Take the MRT to Liuzhangli station

**Travel Time:** 40 minutes

**Google Maps:** See [Google Maps Here](#)



## TRY SHAVED ICE AT SHOWAICE 106 CAFE



### About Showaice 106

Showaice 106 Cafe is a retro-themed cafe reminiscent of a bygone era, with vintage decor, nostalgic memorabilia, and retro music creating a charming atmosphere for visitors. This is a great spot to try Taiwan's famous "shaved ice" for dessert - and it is absolutely delicious!

**Address:** 106, Taiwan, Taipei City, Da'an District

**Getting there:** Walk from Linjiang market (10 minute)

**Google Maps:** See [Google Maps Here](#)

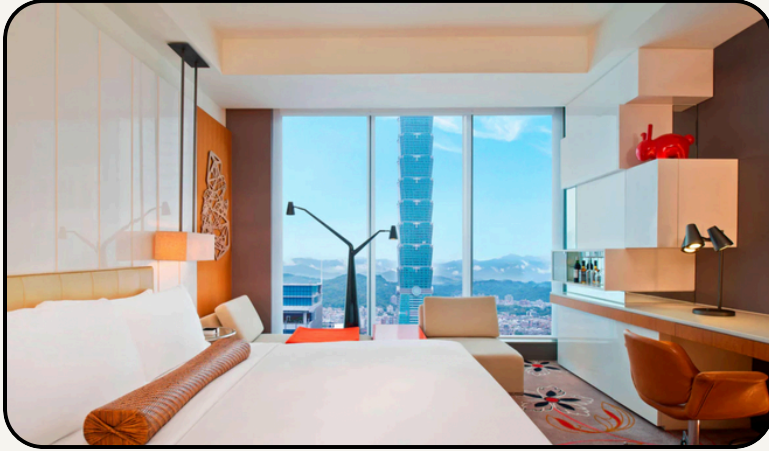


# 7th October 2024

## Morning

---

 CHECKOUT FROM W TAIPEI BY 12PM



 AIRPORT TRANSFER FROM THE HOTEL

Meeting place: W Taipei Lobby

Travel time: 40 minute drive to W Taipei

## Afternoon

---

 FLIGHT CX494 FROM TAIPEI TO HONG KONG

Flight departure time: 01:20pm

Flight arrival time: 03:15pm

Duration: 1 hour 55 minutes

Seat numbers: 40A (Ben: Window seat); 40C (Lisa: Aisle seat)


**Welcome back to HK!**

We value your feedback and hope to hear all about your trip!



 [info@itinerize.travel](mailto:info@itinerize.travel)

 [@itinerize.travel](mailto:@itinerize.travel)

 [+852 6329 0176](tel:+85263290176)

 [www.itinerize.travel](http://www.itinerize.travel)